



**Bluefield**  
MANUFACTURING INC.

# 3/8" Brass Water Sprays

## *Hollow Cone*

- Brass 3/8" Replacement Nozzle
- For Underground Mining Industry
- We are a Distributor for Steinen Mfg Co.
- **Stocked Sizes: #2-2, #3-1, #3-2, #3-3, #3-5, #5-3, #5-5 and 1-1/4"x 3/8" Adapter Head**



SPRAY	Steinen / Hahn	Spraying Systems	Joy Mining	Capacity (Gallons per Minute) GPM				Spray Angle	
				10 PSI	20 PSI	40 PSI	100 PSI	20 PSI	80 PSI
#2-2	SH 2	BD 2	n/a	.20	.28	.40	.63	60 °	70 °
#3-1	SH 3-1	BD 3-1	01566237-0007	-	.18	.26	.40	49 °	65 °
#3-2	SH 3-2	BD 3-2	01566237-0051	.22	.31	.44	.69	57 °	74 °
#3-3	SH 3	BD 3	01566237-0006	.30	.42	.60	.95	64 °	77 °
#3-5	SH 3-5	BD 3-5	n/a	.34	.48	.68	1.1	80 °	95 °
#5-3	SH 5-3	BD 5-3	n/a	-	.52	.74	1.2	59 °	75 °
#5-5	SH 5	BD 5	01566237-0047	.50	.71	1.0	1.6	67 °	76 °



### Brass 1-1/4" X 3/8" Adapter Head

(Joy Mining Part # 01069230-0161)

These nozzles are direct replacements for equivalent Spraying Systems type BD WhirlJet® nozzles.

Bluefield Manufacturing, Inc. · Bluefield, Virginia · (800) 445-4461 · Fax (877) 326-2109  
[sales@bluefieldmfg.com](mailto:sales@bluefieldmfg.com) · [www.bluefieldmfg.com](http://www.bluefieldmfg.com)

# STEINEN

Since 1907

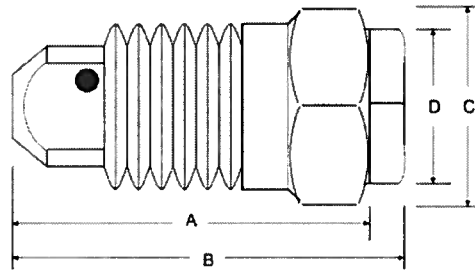
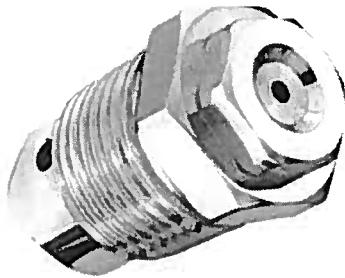
## SH 2 SPRAY NOZZLE DATA SHEET

### SPRAYLET™ *HOLLOW CONE* NOZZLES

### TYPE SH (Steinen/Hahn)

SH type Spraylet nozzles produce a uniform hollow cone spray and are generally used in mining and other applications for dust suppression.

The SH 2 Spraylet nozzle is manufactured by HAHN Industries, a Division of Steinen. These nozzles are direct replacements for equivalent Spraying Systems BD 2 WhirlJet® nozzles.



#### DIMENSIONS & WEIGHTS

Nozzle Type	Material	Inlet				C (in.)	D (in.)	Weight Approx.(oz.)
		Conn. (in.)	A (in.)	B (in.)				
STEINEN/HAHN	Brass	3/8"	1 3/32"	1 7/32"	11/16"	1/2"	1	
Spraying Systems	Brass	3/8"	1 3/32"	1 1/4"	11/16"	1/2"	1	

Nozzle Type	RATED CAPACITY (gallons/minute)				SPRAY ANGLE	
	10 PSI	20 PSI	40 PSI	100 PSI	20 PSI	80 PSI
STEINEN/HAHN	0.20	0.28	0.40	0.63	60°	70°
Spraying Systems	0.20	0.28	0.40	0.63	60°	70°

Order Steinen part # SH 2. Previously known as either part #281-00292, #281-00282 or #281-00202.

#### CALCULATED FLOW RATES (gallons/minute)

45 PSI	50 PSI	55 PSI	60 PSI	65 PSI	70 PSI	75 PSI	80 PSI
0.42	0.45	0.47	0.49	0.51	0.53	0.55	0.57
85 PSI	90 PSI	95 PSI	100 PSI	105 PSI	110 PSI	115 PSI	120 PSI
0.58	0.60	0.62	0.63	0.65	0.66	0.68	0.69

Calculated flow rates accurate to within ±5%

WhirlJet® is a registered trademark of the Spraying Systems Co.

### HAHN



Steinen 29 East Halsey Rd. Parsippany, NJ 07054  
Phone: 973-887-6400 Fax: 973-887-4632 E-mail: info@steinen.com

Copyright 2010  
Wm Steinen Manufacturing Co.

# STEINEN

Since 1907

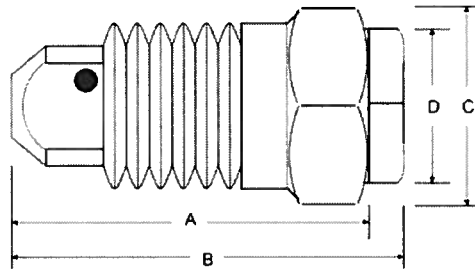
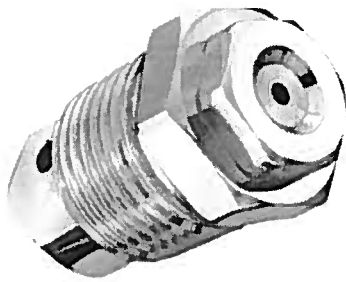
## SH 3-1 SPRAY NOZZLE DATA SHEET

### SPRAYLET™ HOLLOW CONE NOZZLES

### TYPE SH (Steinen/Hahn)

SH type Spraylet nozzles produce a uniform hollow cone spray and are generally used in mining and other applications for dust suppression.

The SH 3-1 Spraylet nozzle is manufactured by HAHN Industries, a Division of Steinen. These nozzles are direct replacements for equivalent Spraying Systems BD 3-1 WhirlJet® nozzles.



DIMENSIONS & WEIGHTS									
Nozzle Type	Material	Inlet			A (in.)	B (in.)	C (in.)	D (in.)	Weight Approx.(oz.)
		Conn. (in.)							
STEINEN/HAHN	SH 3-1	Brass	3/8"		1 3/32"	1 7/32"	11/16"	1/2"	1
Spraying Systems	BD 3-1	Brass	3/8"		1 3/32"	1 1/4"	11/16"	1/2"	1

Nozzle Type	RATED CAPACITY (gallons/minute)				SPRAY ANGLE		
	10 PSI	20 PSI	40 PSI	100 PSI	20 PSI	80 PSI	
STEINEN/HAHN	SH 3-1	-	0.18	0.26	0.40	49°	65°
Spraying Systems	BD 3-1	-	0.18	0.26	0.40	49°	60°*

\* Spray Angle at 100 PSI

Order Steinen part # SH 3-1. Previously known as either part #281-00391, #281-00381 or #281-00301.

#### CALCULATED FLOW RATES (gallons/minute)

45 PSI	50 PSI	55 PSI	60 PSI	65 PSI	70 PSI	75 PSI	80 PSI
0.28	0.29	0.30	0.32	0.33	0.34	0.36	0.37

85 PSI	90 PSI	95 PSI	100 PSI	105 PSI	110 PSI	115 PSI	120 PSI
0.38	0.39	0.40	0.40	0.42	0.43	0.44	0.45

Calculated flow rates accurate to within ±5%

WhirlJet® is a registered trademark of the Spraying Systems Co.

## HAHN



Steinen 29 East Halsey Rd. Parsippany, NJ 07054  
Phone: 973-887-6400 Fax: 973-887-4632 E-mail: info@steinen.com

Copyright 2010  
Wm Steinen Manufacturing Co.

# STEINEN

Since 1907

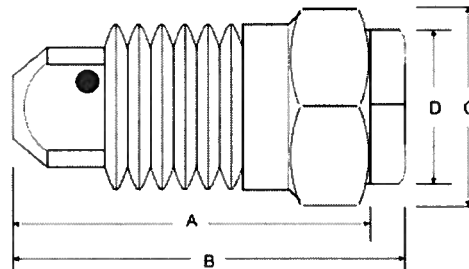
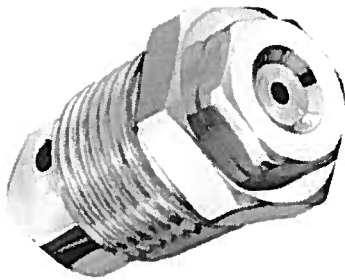
## SH 3-2 SPRAY NOZZLE DATA SHEET

### SPRAYLET™ *HOLLOW CONE* NOZZLES

### TYPE SH (Steinen/Hahn)

SH type Spraylet nozzles produce a uniform hollow cone spray and are generally used in mining and other applications for dust suppression.

The SH 3-2 Spraylet nozzle is manufactured by HAHN Industries, a Division of Steinen. These nozzles are direct replacements for equivalent Spraying Systems BD 3-2 WhirlJet® nozzles.



		DIMENSIONS & WEIGHTS							
Nozzle Type	Material	Inlet			A (in.)	B (in.)	C (in.)	D (in.)	Weight Approx.(oz.)
		Conn. (in.)							
STEINEN/HAHN	SH 3-2	Brass	3/8"		1 3/32"	1 7/32"	11/16"	1/2"	1
Spraying Systems	BD 3-2	Brass	3/8"		1 3/32"	1 1/4"	11/16"	1/2"	1

Nozzle Type	RATED CAPACITY (gallons/minute)				SPRAY ANGLE		
	10 PSI	20 PSI	40 PSI	100 PSI	20 PSI	80 PSI	
STEINEN/HAHN	SH 3-2	0.22	0.31	0.44	0.69	57°	74°
Spraying Systems	BD 3-2	0.22	0.31	0.44	0.69	57°	68°

\* Spray Angle at 100 PSI

Order Steinen part # SH 3-2. Previously known as either part #281-00392, #281-00382 or #281-00302.

#### CALCULATED FLOW RATES (gallons/minute)

45 PSI	50 PSI	55 PSI	60 PSI	65 PSI	70 PSI	75 PSI	80 PSI
0.47	0.49	0.52	0.54	0.56	0.58	0.60	0.62

85 PSI	90 PSI	95 PSI	100 PSI	105 PSI	110 PSI	115 PSI	120 PSI
0.64	0.66	0.68	0.69	0.71	0.73	0.75	0.76

Calculated flow rates accurate to within ±5%

WhirlJet® is a registered trademark of the Spraying Systems Co.



Steinen 29 East Halsey Rd. Parsippany, NJ 07054  
Phone: 973-887-6400 Fax: 973-887-4632 E-mail: info@steinen.com

Copyright 2010  
Wm Steinen Manufacturing Co.

# STEINEN

Since 1907

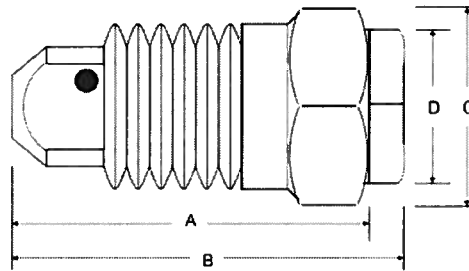
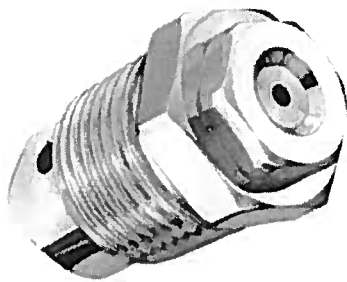
## SH 3 SPRAY NOZZLE DATA SHEET

### SPRAYLET™ *HOLLOW CONE* NOZZLES

### TYPE SH (Steinen/Hahn)

SH type Spraylet nozzles produce a uniform hollow cone spray and are generally used in mining and other applications for dust suppression.

The SH 3 Spraylet nozzle is manufactured by HAHN Industries, a Division of Steinen. These nozzles are direct replacements for equivalent Spraying Systems BD 3 WhirlJet® nozzles.



		DIMENSIONS & WEIGHTS							
Nozzle Type	Material	Inlet			A (in.)	B (in.)	C (in.)	D (in.)	Weight Approx.(oz.)
		Conn. (in.)							
STEINEN/HAHN	SH 3	Brass	3/8"		1 3/32"	1 7/32"	11/16"	1/2"	1
Spraying Systems	BD 3	Brass	3/8"		1 3/32"	1 1/4"	11/16"	1/2"	1

Nozzle Type	RATED CAPACITY (gallons/minute)	SPRAY ANGLE					
		10 PSI	20 PSI	40 PSI	100 PSI	20 PSI	80 PSI
STEINEN/HAHN	SH 3	0.30	0.42	0.60	0.95	64°	77°
Spraying Systems	BD 3	0.30	0.42	0.60	0.95	64°	77°

Order Steinen part # SH 3. Previously known as Hahn 3-3 or as part #281-00393, #281-00383 or #281-00303.

#### CALCULATED FLOW RATES (gallons/minute)

45 PSI	50 PSI	55 PSI	60 PSI	65 PSI	70 PSI	75 PSI	80 PSI
0.64	0.67	0.70	0.73	0.76	0.79	0.82	0.85

85 PSI	90 PSI	95 PSI	100 PSI	105 PSI	110 PSI	115 PSI	120 PSI
0.87	0.90	0.92	0.95	0.97	0.99	1.02	1.04

Calculated flow rates accurate to within ±5%

WhirlJet® is a registered trademark of the Spraying Systems Co.



Steinen 29 East Halsey Rd. Parsippany, NJ 07054  
Phone: 973-887-6400 Fax: 973-887-4632 E-mail: info@steinen.com

Copyright 2010  
Wm Steinen Manufacturing Co.

# STEINEN

Since 1907

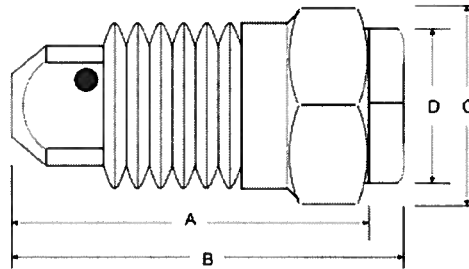
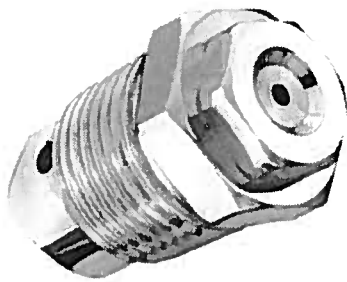
## SH 3-5 SPRAY NOZZLE DATA SHEET

### SPRAYLET™ *HOLLOW CONE* NOZZLES

### TYPE SH (Steinen/Hahn)

SH type Spraylet nozzles produce a uniform hollow cone spray and are generally used in mining and other applications for dust suppression.

The SH 3-5 Spraylet nozzle is manufactured by HAHN Industries, a Division of Steinen. These nozzles are direct replacements for equivalent Spraying Systems BD 3-5 WhirlJet® nozzles.



#### DIMENSIONS & WEIGHTS

Nozzle Type	Material	Inlet			Weight			
		Conn. (in.)	A (in.)	B (in.)	C (in.)	D (in.)	Approx.(oz.)	
STEINEN/HAHN	SH 3-5	Brass	3/8"	1 3/32"	1 7/32"	11/16"	1/2"	1
Spraying Systems	BD 3-5	Brass	3/8"	1 3/32"	1 1/4"	11/16"	1/2"	1

Nozzle Type	RATED CAPACITY (gallons/minute)				SPRAY ANGLE	
	10 PSI	20 PSI	40 PSI	100 PSI	20 PSI	80 PSI
STEINEN/HAHN	SH 3-5	0.34	0.48	0.68	1.1	80° 95°
Spraying Systems	BD 3-5	0.34	0.48	0.68	1.1	80° 86°*

\* Spray Angle at 100 PSI

Order Steinen part # SH 3-5. Previously known as either part #281-00395, #281-00385 or #281-00305.

#### CALCULATED FLOW RATES (gallons/minute)

45 PSI	50 PSI	55 PSI	60 PSI	65 PSI	70 PSI	75 PSI	80 PSI
0.72	0.76	0.80	0.83	0.87	0.90	0.93	0.96

85 PSI	90 PSI	95 PSI	100 PSI	105 PSI	110 PSI	115 PSI	120 PSI
0.99	1.02	1.05	1.10	1.11	1.13	1.15	1.18

Calculated flow rates accurate to within ±5%

WhirlJet® is a registered trademark of the Spraying Systems Co.

## HAHN



Steinen 29 East Halsey Rd. Parsippany, NJ 07054  
Phone: 973-887-6400 Fax: 973-887-4632 E-mail: info@steinen.com

Copyright 2010  
Wm Steinen Manufacturing Co.

# STEINEN

Since 1907

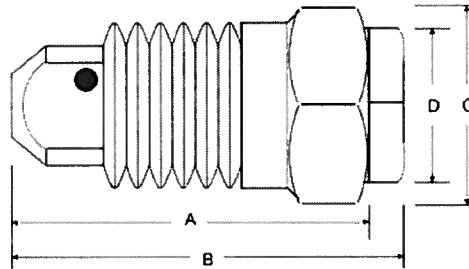
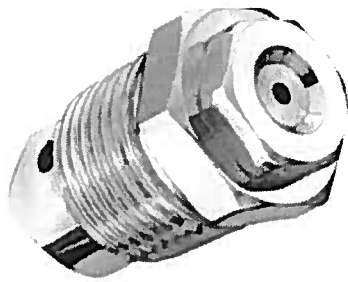
## SH 5-2 SPRAY NOZZLE DATA SHEET

### SPRAYLET™ HOLLOW CONE NOZZLES

### TYPE SH (Steinen/Hahn)

SH type Spraylet nozzles produce a uniform hollow cone spray and are generally used in mining and other applications for dust suppression.

The SH 5-2 Spraylet nozzle is manufactured by HAHN Industries, a Division of Steinen. These nozzles are direct replacements for equivalent Spraying Systems BD 5-2 WhirlJet® nozzles.



		DIMENSIONS & WEIGHTS							
Nozzle Type	Material	Inlet			A (in.)	B (in.)	C (in.)	D (in.)	Weight Approx.(oz.)
		Conn. (in.)							
STEINEN/HAHN	SH 5-2	Brass	3/8"		1 3/32"	1 7/32"	11/16"	1/2"	1
Spraying Systems	BD 5-2	Brass	3/8"		1 3/32"	1 1/4"	11/16"	1/2"	1

Nozzle Type		RATED CAPACITY (gallons/minute)				SPRAY ANGLE	
		10 PSI	20 PSI	40 PSI	100 PSI	20 PSI	80 PSI
STEINEN/HAHN	SH 5-2	-	0.38	0.54	0.85	50°	65°
Spraying Systems	BD 5-2	-	0.38	0.54	0.85	50°	61°*

\* Spray Angle at 100 PSI

Order Steinen part # SH 5-2. Previously known as either part #281-00592, #281-00582 or #281-00502.

#### CALCULATED FLOW RATES (gallons/minute)

45 PSI	50 PSI	55 PSI	60 PSI	65 PSI	70 PSI	75 PSI	80 PSI
0.57	0.60	0.63	0.66	0.69	0.71	0.74	0.76

85 PSI	90 PSI	95 PSI	100 PSI	105 PSI	110 PSI	115 PSI	120 PSI
0.79	0.81	0.83	0.85	0.87	0.90	0.92	0.94

Calculated flow rates accurate to within ±5%

WhirlJet® is a registered trademark of the Spraying Systems Co.



Steinen 29 East Halsey Rd. Parsippany, NJ 07054  
Phone: 973-887-6400 Fax: 973-887-4632 E-mail: info@steinen.com

Copyright 2010  
Wm Steinen Manufacturing Co.

# STEINEN

Since 1907

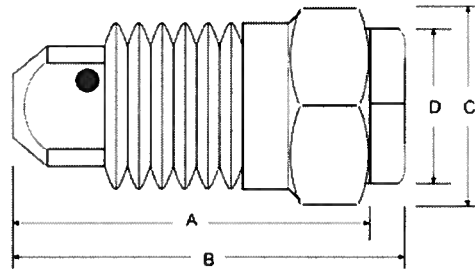
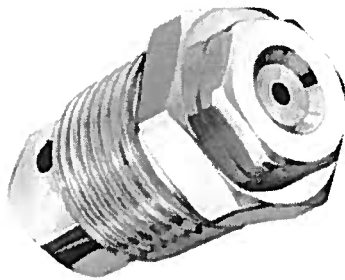
## SH 5-3 SPRAY NOZZLE DATA SHEET

### SPRAYLET™ *HOLLOW CONE* NOZZLES

### TYPE SH (Steinen/Hahn)

SH type Spraylet nozzles produce a uniform hollow cone spray and are generally used in mining and other applications for dust suppression.

The SH 5-3 Spraylet nozzle is manufactured by HAHN Industries, a Division of Steinen. These nozzles are direct replacements for equivalent Spraying Systems BD 5-3 WhirlJet® nozzles.



#### DIMENSIONS & WEIGHTS

Nozzle Type	Material	Inlet						Weight Approx.(oz.)
		Conn. (in.)	A (in.)	B (in.)	C (in.)	D (in.)		
STEINEN/HAHN	SH 5-3	Brass	3/8"	1 3/32"	1 7/32"	11/16"	1/2"	1
Spraying Systems	BD 5-3	Brass	3/8"	1 3/32"	1 1/4"	11/16"	1/2"	1

Nozzle Type	RATED CAPACITY (gallons/minute)				SPRAY ANGLE		
	10 PSI	20 PSI	40 PSI	100 PSI	20 PSI	80 PSI	
STEINEN/HAHN	SH 5-3	-	0.52	0.74	1.2	59°	75°
Spraying Systems	BD 5-3	-	0.52	0.74	1.2	59°	66°*

\* Spray Angle at 100 PSI

Order Steinen part # SH 5-3. Previously known as either part #281-00593, #281-00583 or #281-00503.

#### CALCULATED FLOW RATES (gallons/minute)

45 PSI	50 PSI	55 PSI	60 PSI	65 PSI	70 PSI	75 PSI	80 PSI
0.78	0.83	0.87	0.91	0.94	0.98	1.01	1.05

85 PSI	90 PSI	95 PSI	100 PSI	105 PSI	110 PSI	115 PSI	120 PSI
1.08	1.11	1.15	1.20	1.21	1.23	1.25	1.28

Calculated flow rates accurate to within ±5%

WhirlJet® is a registered trademark of the Spraying Systems Co.

## HAHN



Steinen 29 East Halsey Rd. Parsippany, NJ 07054  
Phone: 973-887-6400 Fax: 973-887-4632 E-mail: info@steinen.com

Copyright 2010  
Wm Steinen Manufacturing Co.



# STEINEN

Since 1907

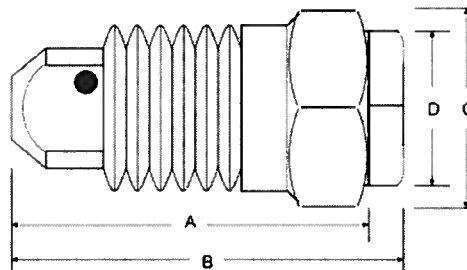
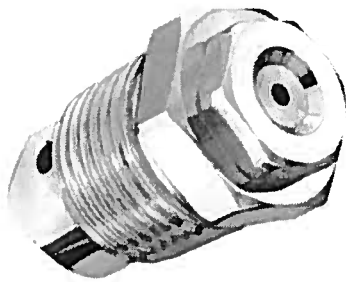
## SH 5 SPRAY NOZZLE DATA SHEET

### SPRAYLET™ *HOLLOW CONE* NOZZLES

### TYPE SH (Steinen/Hahn)

SH type Spraylet nozzles produce a uniform hollow cone spray and are generally used in mining and other applications for dust suppression.

The SH 5 Spraylet nozzle is manufactured by HAHN Industries, a Division of Steinen. These nozzles are direct replacements for equivalent Spraying Systems BD 5 WhirlJet® nozzles.



DIMENSIONS & WEIGHTS									
Nozzle Type	Material	Inlet			A (in.)	B (in.)	C (in.)	D (in.)	Weight Approx.(oz.)
		Conn. (in.)							
STEINEN/HAHN	SH 5	Brass	3/8"		1 3/32"	1 7/32"	11/16"	1/2"	1
Spraying Systems	BD 5	Brass	3/8"		1 3/32"	1 1/4"	11/16"	1/2"	1

Nozzle Type	RATED CAPACITY (gallons/minute)	SPRAY ANGLE					
		10 PSI	20 PSI	40 PSI	100 PSI	20 PSI	80 PSI
STEINEN/HAHN	SH 5	0.50	0.71	1.0	1.6	67°	76°
Spraying Systems	BD 5	0.50	0.71	1.0	1.6	67°	76°

Order Steinen part # SH 5. Previously known as Hahn 5-5 or as part #281-00595, #281-00585 or #281-00505.

#### CALCULATED FLOW RATES (gallons/minute)

45 PSI	50 PSI	55 PSI	60 PSI	65 PSI	70 PSI	75 PSI	80 PSI
1.06	1.12	1.16	1.20	1.26	1.32	1.37	1.40

85 PSI	90 PSI	95 PSI	100 PSI	105 PSI	110 PSI	115 PSI	120 PSI
1.45	1.50	1.55	1.60	1.63	1.66	1.70	1.73

Calculated flow rates accurate to within ±5%

WhirlJet® is a registered trademark of the Spraying Systems Co.



Steinen 29 East Halsey Rd. Parsippany, NJ 07054  
Phone: 973-887-6400 Fax: 973-887-4632 E-mail: info@steinen.com

Copyright 2010  
Wm Steinen Manufacturing Co.

# STEINEN

Since 1907

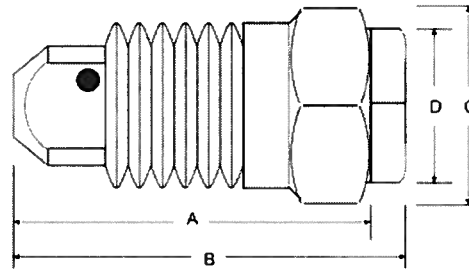
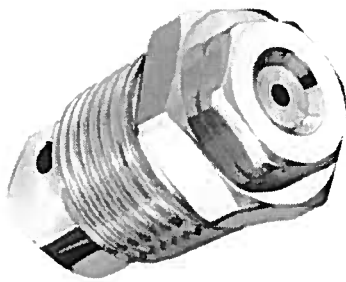
## SH 8 SPRAY NOZZLE DATA SHEET

### SPRAYLET™ *HOLLOW CONE* NOZZLES

### TYPE SH (Steinen/Hahn)

SH type Spraylet nozzles produce a uniform hollow cone spray and are generally used in mining and other applications for dust suppression.

The SH 8 Spraylet nozzle is manufactured by HAHN Industries, a Division of Steinen. These nozzles are direct replacements for equivalent Spraying Systems BD 8 WhirlJet® nozzles.



DIMENSIONS & WEIGHTS								
Nozzle Type	Material	Inlet			Dimensions			Weight
		Conn. (in.)	A (in.)	B (in.)	C (in.)	D (in.)	Approx. (oz.)	
STEINEN/HAHN	SH 8	Brass	3/8"	1 3/32"	1 7/32"	11/16"	1/2"	1
Spraying Systems	BD 8	Brass	3/8"	1 3/32"	1 1/4"	11/16"	1/2"	1

Nozzle Type	RATED CAPACITY (gallons/minute)				SPRAY ANGLE	
	10 PSI	20 PSI	40 PSI	100 PSI	20 PSI	80 PSI
STEINEN/HAHN	SH 8	0.80	1.1	1.6	2.5	65° / 70°
Spraying Systems	BD 8	0.80	1.1	1.6	2.5	65° / 70°

Order Steinen part # SH 8. Previously known as either part #281-01098, #281-01088 or #281-01008.

#### CALCULATED FLOW RATES (gallons/minute)

45 PSI	50 PSI	55 PSI	60 PSI	65 PSI	70 PSI	75 PSI	80 PSI
1.70	1.80	1.90	2.00	2.05	2.10	2.20	2.30

85 PSI	90 PSI	95 PSI	100 PSI	105 PSI	110 PSI	115 PSI	120 PSI
2.35	2.40	2.45	2.50	2.58	2.65	2.71	2.77

Calculated flow rates accurate to within ±5%

WhirlJet® is a registered trademark of the Spraying Systems Co.



Steinen 29 East Halsey Rd. Parsippany, NJ 07054  
Phone: 973-887-6400 Fax: 973-887-4632 E-mail: info@steinen.com

Copyright 2010  
Wm Steinen Manufacturing Co.

# HAHN INDUSTRIES, A DIVISION OF WM. STEINEN MFG. CO.

MANUFACTURER OF MINING EQUIPMENT SPECIALTY NOZZLES FOR:  
 JOY TECHNOLOGIES INC. / JOY MINING MACHINERY

## JOY SPRAY NOZZLES EQUIVALENCY CHART

JOY	SPRAYING SYSTEMS	NOZZLE PART NO.			STEINEN	SIZE NO.	ORIFICE SIZE	CAPACITY PSI/GPM							
		Size No. Not Stamped on Nozzle Assembly	Size No. Stamped on Body Only of the Nozzle Assembly	Size No. Stamped on the Body and Cap of the Nozzle Assembly				60 PSI	80 PSI	100 PSI	200 PSI	300 PSI	400 PSI	500 PSI	600 PSI
01566237-0006	3/8 BD 3	281-00303	281-00383	281-00393	3-3	0.094	0.73	0.85	0.94	1.3	1.6	1.9	2.1	2.25	
01566237-0007	3/8 BD 3-1	281-00301	281-00381	281-00391	3-1	0.063	0.31	0.35	0.40	0.57	0.70	0.80	0.90	0.98	
01566237-0011	3/8 BD 3-05	-	-	-	3-05	0.047	0.22	0.25	0.32	0.45	0.55	0.63	0.71	0.79	
01566237-0012	3/8 BD 3-8	281-00308	281-00388	281-00398	3-8	0.156	0.98	1.14	1.3	1.8	2.3	2.6	2.9	3.18	
01566237-0013	3/8 BD 5-8	281-00508	281-00588	281-00598	5-8	0.156	1.1	1.3	1.7	2.5	3.0	3.5	3.9	4.2	
01566237-0032	3/8 BD 20-2	281-02002	281-02082	281-02092	20-2	0.078	0.93	1.08	1.2	1.7	2.1	2.45	2.75	3.0	
01566237-0051	3/8 BD 3-2	281-00302	281-00382	281-00392	3-2	0.078	0.46	0.56	0.63	0.98	1.2	1.4	1.6	1.7	
01069408-0004	-	-	-	-	-	0.076	0.36	0.42	0.48	0.66	0.82	0.92	1.1	1.2	
01566237-0047	3/8 BD 5	281-00505	281-00585	281-00595	5-5	0.125	1.0	1.2	1.6	2.2	2.7	3.2	3.5	3.8	

*Certification: Steinen certifies that the Steinen parts contained in the above chart are equivalent to the Spraying Systems part numbers in all material respects, including dimensions, material, spray flow and angle.*

ALL STEINEN 281-XXXXX NOZZLES FIT  
 JOY 01069230-0161 ADAPTERS (1-1/4 X 3/8)  
 (USE STEINEN EQUIVALENT ADAPTER 363-00000)  
 Revision Date: January 1, 2009

**Wm. Steinen Mfg. Co.**  
 29 E. Halsey Rd.  
 Parsippany, NJ 07054  
 973-887-6400  
 www.steinen.com